



Company Profile



**Automated Micron Assembly Pte Ltd**

*"The Value Added Systems Supplier"*

Company Registration Number  
199700875H

The bottom half of the page is decorated with large, overlapping geometric shapes in various shades of blue (dark blue, medium blue, and light blue) and white, creating a dynamic, abstract pattern.

# About AMA



Founded in 1997 as a robot system integrator

We are a leading automation systems provider

We provide solutions in the field of:

- Robotics
- Motion controls
- Instrumentation
- Aerospace & Defence





## Geographical Presence

# Product Portfolio

## Robotics

**NIVE**  
FLEXIBLE PARTS FEEDER

**WI**Robotics  
WE INNOVATE

**HYULIM** ROBOT

**FLEXIV**

**STÄUBLI**

**YOUIBOT**  
优艾智合

**EFFECTO**

**ELITE ROBOTS**

**Japet.**

**DAIMON**  
ROBOTICS

**TERABEE**

**ATI** INDUSTRIAL  
AUTOMATION  
A Novanta Company

**ARTIMINDS**

**HAPLY**

**LEP** Ludl  
Electronic  
Products Ltd.

**Shadow**  
ROBOTS

**VUOTOTEKNICA**  
www.vuototecnica.com

**atomrobot**

**HAN'S ROBOT**

**MECADEMIC**

**Shibaura Machine**

**maoiclab**

**BOA**  
systems

**HEXAR**

**LIMX**  
DYNAMICS

**SoftGripping**

**MYACTUATOR**  
Professional - Reliable - Innovative

**DOOSAN**

**HMT**

**BOOSTER**  
ROBOTICS

# Product Portfolio

## Motions Controls

**KOLLMORGEN**  
A REGAL REXNORD BRAND

**HEIDENHAIN**

**DINGS**  
Precision Motion Specialist

**npoint**

**TECHNOSOFT**

**THOMSON**

**JUSTEK**  
Linear Motion Technology

**LSIS**  
Industrial Systems

**iNetic**  
POWERING YOUR PRODUCTS

**VTÖ**  
DREHTECHNIK

**Portescap**

**Magmotor Technologies Inc.**

**Regal Rexnord**

**MAVILOR**  
INFRANOR GROUP COMPANY

**KW**  
KWANGWOOD

**MMT**

**RSF Elektronik**

**AMETEK**  
PRECISION MOTION CONTROL  
Windjammer Nautifair PITTMAN ROTRON

**KENDRION** **MICRON**  
by Boston Gear

**SERVOTRONIX**  
always in motion™

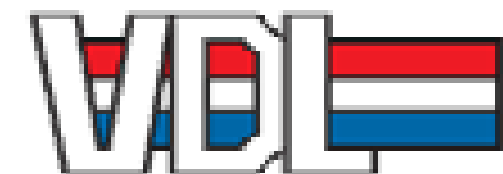
**DRIVE SYSTEMS srl**

**LAB**  
MOTION SYSTEMS

**MIGHTY**  
MINI LINEAR SERVO MOTOR

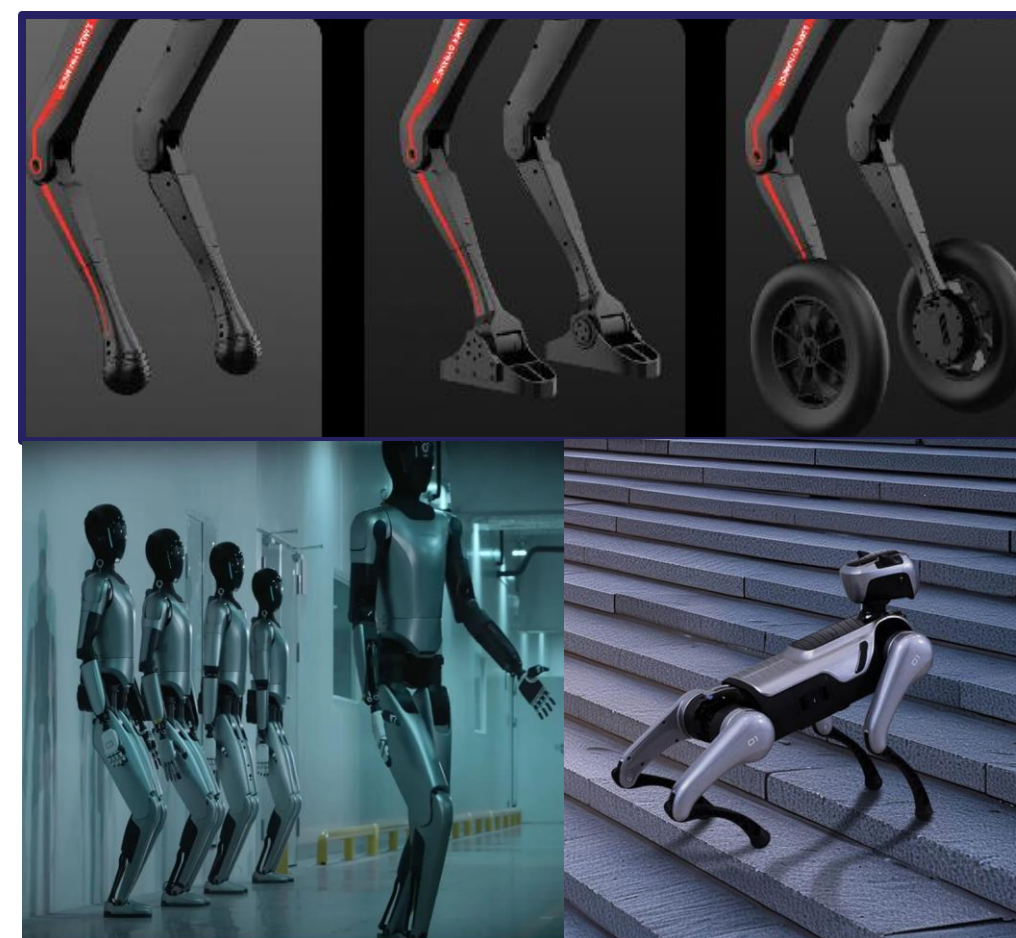
**welcon**  
SYSTEMS

# Key Customers (Partial)



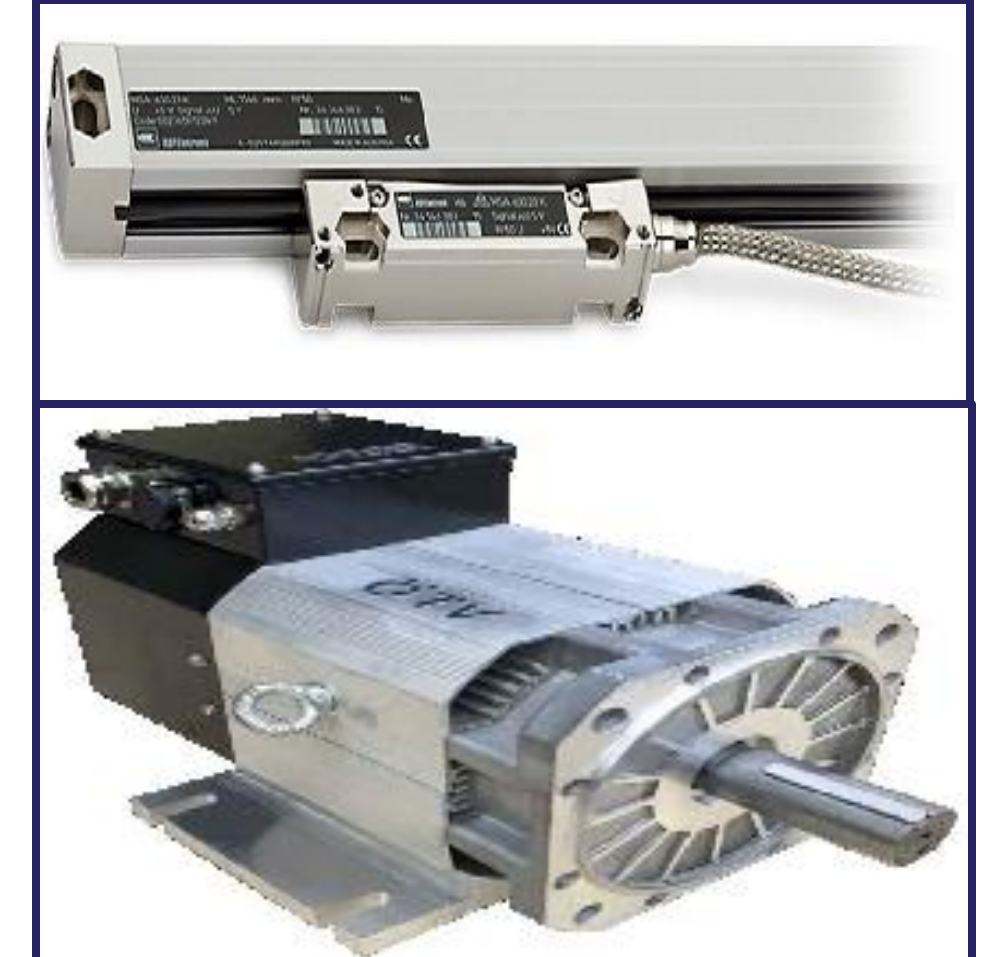
# Robotics

- Direct Humanoid, Quadruped, Autonomous Moving Robot, Multi Biped Robot
- Force feedback control, Exoskeletons, sensors and other wearables



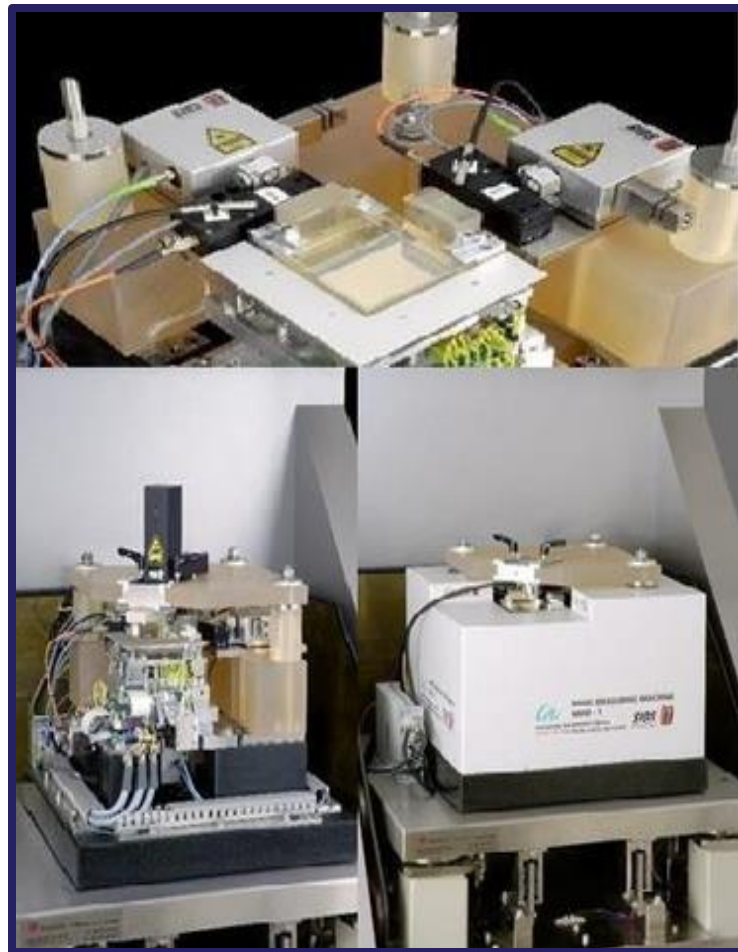
# Motion Control Systems

- Direct Drive & Frameless Motors
- Servo drives & stepper motors
- Actuators, encoders, piezo stages & gearheads



# Instrumentations

- Interferometers
- Pressure mapping
- Vibration absorption system
- Vacuum pumps



# Cleanroom Transportation

## DESCRIPTION

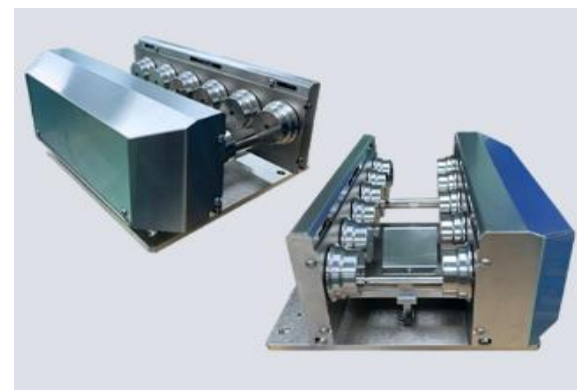
The Cleanroom Transportation Systems are designed suitable for variety of Ultra-Clean Environment material handling applications. Light, Compact, and Elegant Modular design offers flexibility for start-up commissioning and future floor plan expansion and/or upgrading.

## MACHINE FEATURES

- High Reliability, Ultra-Clean, ESD/Conductive rollers with intelligent conveying control mechanism making it unique and eliminate the abundance of minute particles generated by friction-base systems.
- Install a totally integrated, direct transport network (on ceiling height) to assure high delivery capacity and dynamic load factor to save clean room space with overheads handling.
- Repeatability and Accuracy, Quick and Easy Maintenance minimizes machine downtime.
- Result is a more Cost-Effective Solution and Low Cost of Ownership for high volume manufacturing with improved Quality, Reduced Cost, Productivity improvement and High UPH.



PRIMELIFTER



PRIMEVEYOR



PRIMEROTATOR



PRIMESHUTTLE

# Wafer Aligner

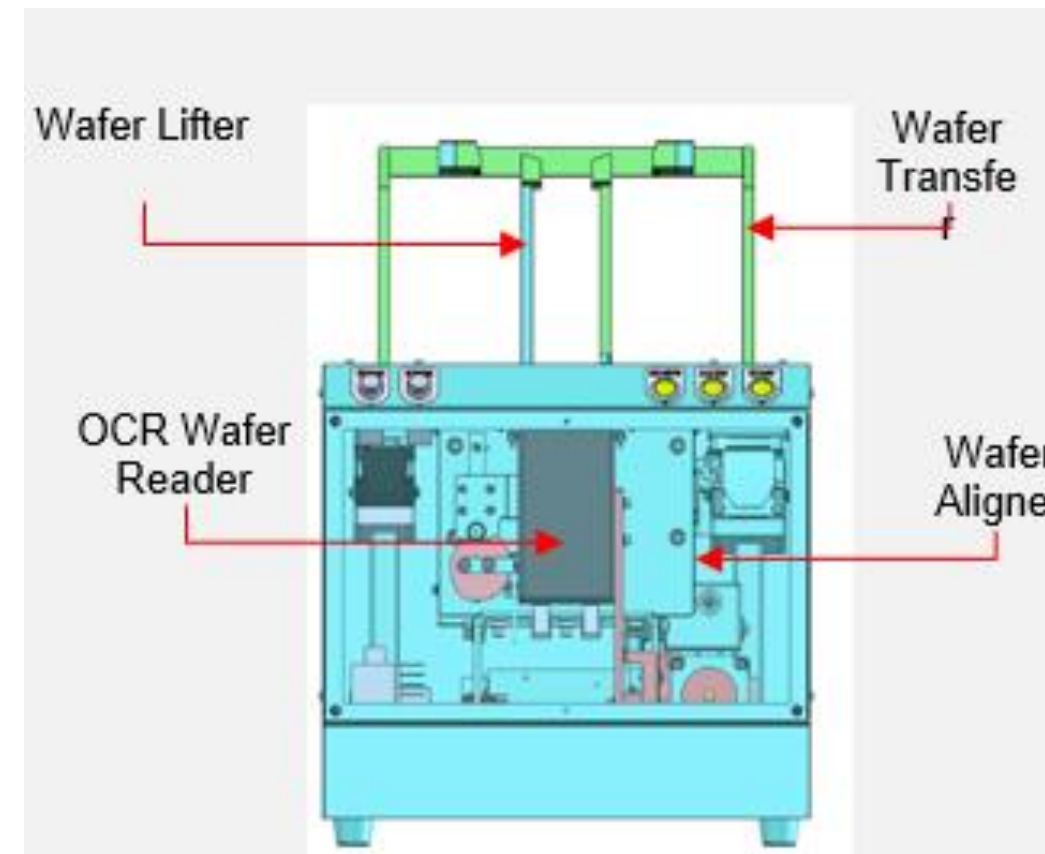
## DESCRIPTION

The **6/8-INCH CASSETTE TO CASSETTE WAFER TRANSFER** is a Clean Room Class 10 system designed to align 6-inch Wafers contained in a cassette, perform wafer ID reading and then Transfer wafers to new cassette.

SEQUENCE: Align Wafer → Wafer OCR Reading → Lift Wafers → Replace Empty Cassette (Manual) → Place Wafers to New Cassette.

## MACHINE FEATURES

- ✓ Clean Room Class 10 compliant.
- ✓ Incorporates Wafer OCR Reader for Data collection.
- ✓ Customizable to cater various wafer sizes.
- ✓ Repeatability and Accuracy, Quick and Easy Maintenance minimizes machine downtime.
- ✓ Result is a more Cost-Effective Solution and Low Cost of Ownership for high volume manufacturing with improved Quality, Reduced Cost, Productivity improvement and High UPH.



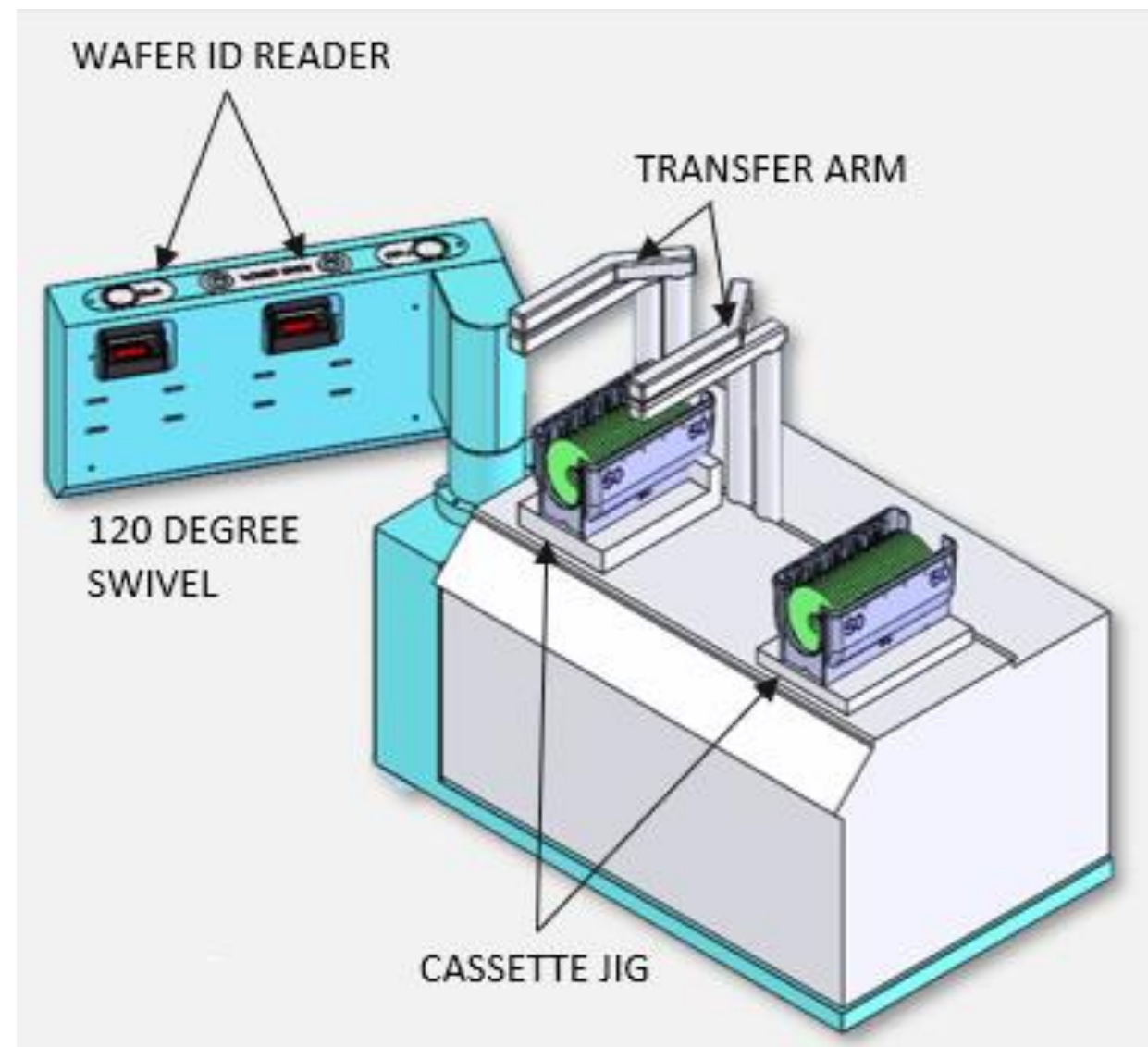
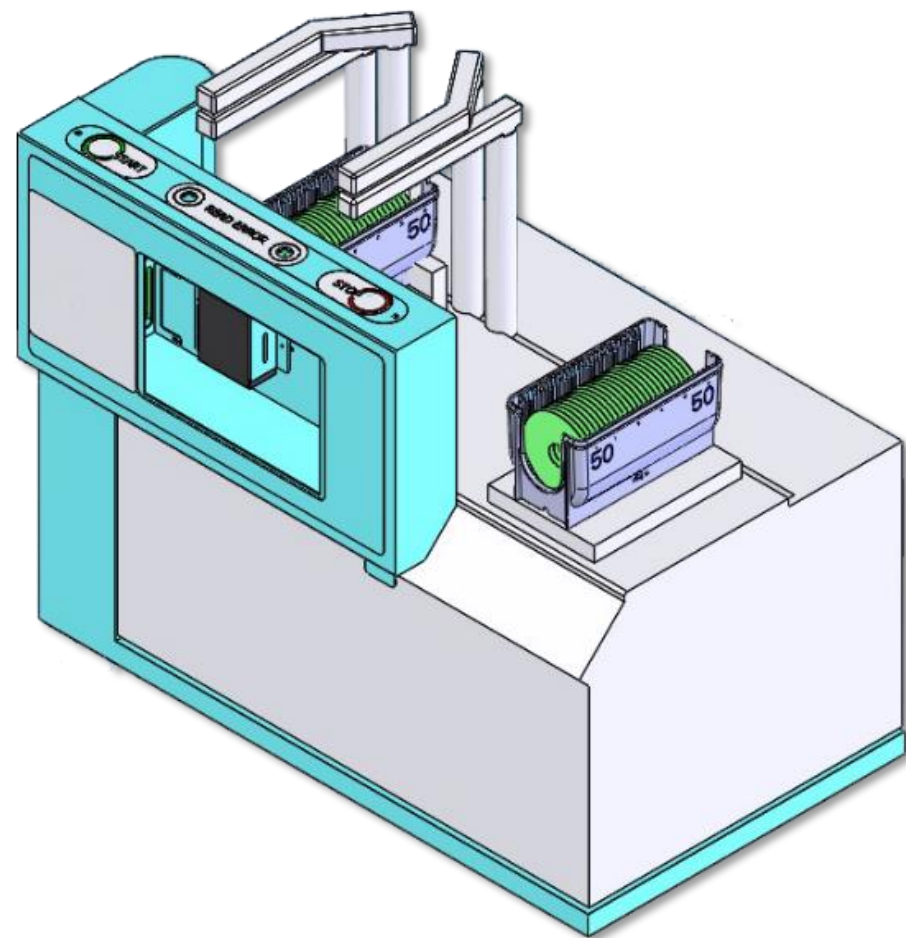
# Wafer ID Reader & Transfer Station

## DESCRIPTION

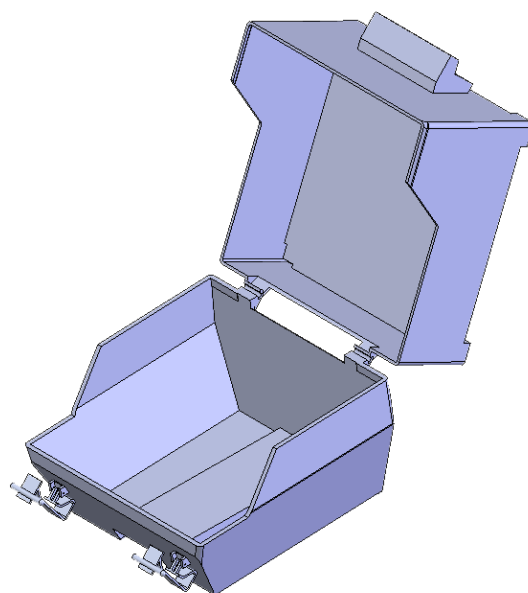
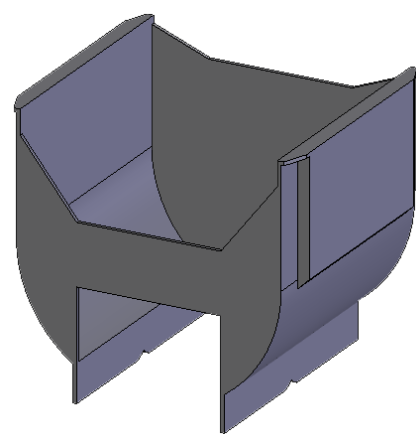
The **WAFER ID READER & TRANSFER STATION** is a Wafer handling system designed to read Wafer IDs and transfer Wafers from a Cassette to another Cassette or to a Boat. The system is compact in design & is compliant with cleanroom class 10 environment.

## MACHINE FEATURES

- ✓ Clean Room Class 10 compliant.
- ✓ Incorporates Wafer OCR Reader for Data collection.
- ✓ Customizable to cater various wafer sizes.
- ✓ Repeatability and Accuracy, Quick and Easy Maintenance minimizes machine downtime.
- ✓ Result is a more Cost-Effective Solution and Low Cost of Ownership for high volume manufacturing with improved Quality, Reduced Cost, Productivity improvement and High UPH.



# Wafer Cassette Cleaning Machine



## DESCRIPTION

The **WAFER CASSETTE CLEANING MACHINE** is designed to wash Cassettes and Cassette Boxes using DI Water. The system uses 12 Rotating Pressure Sprayer System to wash the products and Hot Air Blower to dry them after.

## MACHINE FEATURES

- ✓ Clean Room Class 10 Compatible.
- ✓ Top & Bottom Pressurized Rotating DI Water Spray for 360 cassette & box spraying coverage.
- ✓ Auto Drying System.
- ✓ Quick and Easy Maintenance minimizes machine downtime.
- ✓ Result is a more Cost-Effective Solution and Low Cost of Ownership for high volume manufacturing with improved Quality, Reduced Cost, Productivity improvement and High UPH.

# Wafer Sorter Machine



## DESCRIPTION

The **WAFER SORTER MACHINE** is designed to automate the loading or Unloading of Wafer (8-Inch & 6-Inch) from a Wafer Carrier to or from a Magazine. The process also involves Wafer OCR Reading and Wafer Alignment.

## MACHINE FEATURES

- ✓ Auto width conveyor to cater different Cassette sizes.
- ✓ SMEMA Compatible.
- ✓ Touch Screen PLC for GUI.
- ✓ Able to run opposite sequence (Load or Unload) without mechanical conversion.

# Wafer Metal Cassette Load/Unload Machine



## DESCRIPTION

The **WAFER METAL CASSETTE LOADER/UNLOADER MACHINE** is a fully automated system designed to Load Metal Cassettes to Main Automation Machine. The system is fully programmable to run various product types and sizes and is designed to hold multiple Magazines at a time. The modules can be easily adjusted to accommodate different product sizes.

## MACHINE FEATURES

- ✓ Able to Handle 2 Wafer Sizes at the same time without mechanical conversion.
- ✓ SMEMA Compatible.
- ✓ Shuttle Conveyor for flexible Load/Unload Position.
- ✓ Touch Screen PLC for GUI.

# Wafer Metal Cassette Conveyor System

## DESCRIPTION

The **WAFER Metal Cassette Conveyor System** is multilane conveyor system designed to transfer Metal Cassettes from upstream to downstream systems. The Metal Cassettes will be automatically loaded from upstream machine to the conveyor system for manual visual inspection, wafers that passed the manual inspection will then proceed to the downstream machine. The conveyor modules can be converted automatically to run either 8-inch or 6-inch Metal Cassettes.

## MACHINE FEATURES

- ✓ Auto width conveyor to cater different Cassette sizes.
- ✓ SMEMA Compatible.
- ✓ Touch Screen PLC for GUI.



# The Full Picture

Automated Micron Assembly (AMA) is a Singapore-based automation systems integrator founded in 1997. We specialize in delivering turnkey solutions across robotics, motion control, instrumentation, and defense applications. Our capabilities span industrial and collaborative robot systems, direct drive motors, servo actuators, force-torque sensors, exoskeletons, and autonomous mobile robots (AMRs). These solutions are tailored for demanding industries such as semiconductors, medical automation, aerospace, and advanced manufacturing.

AMA integrates high-performance components with vision systems, real-time controls, and PLC/PC programming to build reliable, cleanroom-ready, and high-throughput automation setups. We work with global brands including ABB, Denso, Flexiv, and Meca500, and provide simulation, custom tool design, and collaborative robot integration. Beyond hardware, we offer full lifecycle support—from design and sourcing to system commissioning and service—enabling our clients across Southeast Asia to implement smart, efficient, and future-proof automation systems.